

# DP6 series Precision Sensor Meter Instruction Manual

Thanks a lot for selecting **myPin** product!

Before operating this instrument, please carefully read this manual and fully understand its contents. If any problems, please contact our sales or distributors whom you buy from. This manual is subject to change without prior notice.

**Warning**

Do not turn on the power supply until all of the wiring is completed. Otherwise electrical shock, fire or malfunction may result.

Do not turn on the power supply when cleaning this instrument.

Do not disassemble, repair or modify the instrument. This may cause electrical shock, fire or malfunction.

Use this instrument in the scope of its specifications. Otherwise fire or malfunction may result.

**Caution**

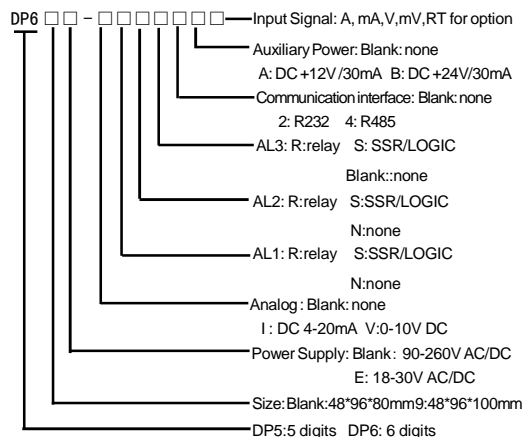
This instrument should be installed in a domestic environment.

To avoid using this instrument in environment of strong shock or concussion.

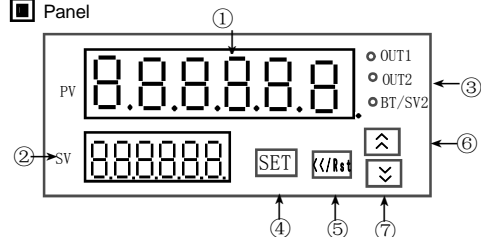
To avoid using this instrument in environment of overflow water or explosive oil.

Do not put together with large current wire to avoid electromagnetic radiation.  
If it is a must, we suggest a individual pipe to work with.

### Code Illustration



Panel



- ① Measuring value/Parameter code display
- ② AL1/ parameter value setting
- ③ Input lamps: OUT1: alarm 1, OUT2:alarm 2, BT/SV2:of no use
- ④ Parameters Select / Confirm key
- ⑤ Shift key
- ⑥⑦ up or down key

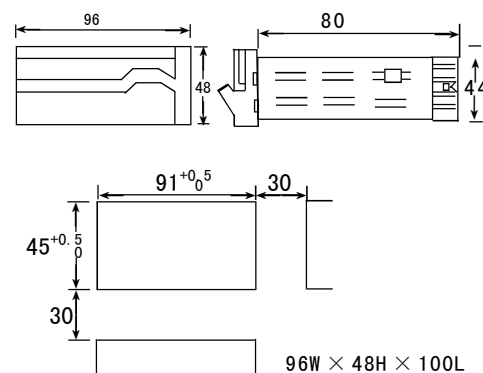
## Specifications

Power	80-260V AC/DC or 18-30V DC
Measuring range	-19999-99999 Demical point floating
Accuracy	0.05%F.S $\pm$ 2digit
Contact capacity	Relay:AC 250V/3A or 30V/5A DC
Electromagnetic Strength	Between terminals of power and others, between terminals of output relay and others, DC 2000V/Leak current 0.5mA, 60s; I/O low voltage signal terminals DC 600V/Leak current 0.5mA, 60s
Insulation resistance	$\geq 100M \Omega / 500V$ DC
Ambient environment	Temperature:0-50 $^{\circ}C$ Humidity: $\leq 85\%RH$
Sampling speed	4-16 times/sec
Dimensions	48*96*80mm

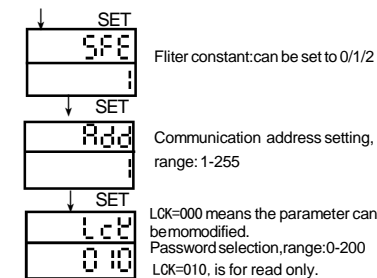
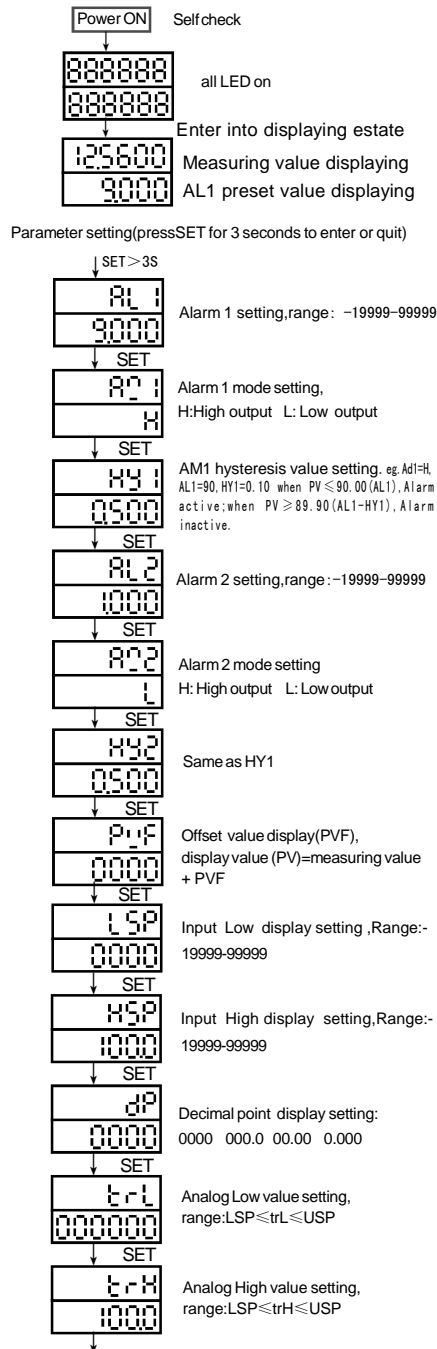
### Parameters setting

1. Parameter setting: In displaying estate, press and hold SET key >3 seconds, enter/quit parameters setting menu. Short press SET key to enter next one, press <<RST shortly to modify the parameter.
2. Short-cut for decimal point setting: press <<RST key to have down green LED flashes, hold SET key and press UP or DOWN key to change the decimal point.

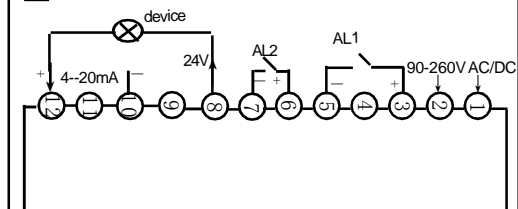
## Dimensions



### Operation process



**Connections** (If any changed, refer the label on the meter).



☐ Complete products contains

- ★1 copy of user manual,
- ★1 inspection QC label,
- ★2 installing brackets,

We are responsible for the overall repairment for the failure of manufacturing quality within 12 months since the date of purchase. Repair fee will be charged accordingly for damage caused by improper use. The product has life-long warranty.

## ■ Main Products

- Timer
- Time relay
- Temperature controller
- Panel meter
- Frequency/Tacho/Line-speed meter
- Proximity sensor
- Photo-electrical sensor
- Transmitter
- Sensor meter
- Power adjustor